

Increasing Hospice and Palliative Care Referrals via Population Health Programs

Speakers:

- Marian Grant, DNP, ACNP-BC, ACHPN, FPCN, RN, Senior Regulatory Advisor, C-TAC
- Cameron Muir, MD, Chief Innovation Office, NPHI



C+TAC

Increasing Hospice and Palliative Care Referrals via Population Health Programs

How to start and free resources for patients and families

8:30-11:30 am

October 21st 2024



Innovation Lab Leadership



Cameron Muir, M.D.
Chief Medical and
Innovation Officer



Marian Grant, D.N.P.
Innovation Lab Clinical
Advisor

Pre-conference Overview

- Community-based hospice and palliative care organizations can enhance expertise by providing care earlier in serious illness and improve enrollment and length of stay.
- Will also position to participate in value-based payment arrangements.
- NPHI, national association of non-profit hospice organizations developed and implemented four population health programs with members.
- Learnings on how to start such programs along with free patients and caregiver resources will be reviewed.
- Participants will break into smaller groups to discuss how their organizations could explore such programs and make use of patient and family resources.

Agenda

Topic	Time
Introduction to NPHI/Innovation Lab	8:30-8:45
Population health benefits to hospice organizations	8:45- 9:00
Implementation learnings	9:00- 9:15
Break	9:15- 9:30
Patient and caregiver guides (video)	9:30- 10:00
Breakouts	10:00-11:00
Summary/conclusion	11:00- 11:30

NPHI Overview

About NPHI



Formed 2013 to serve as **national voice for nonprofit hospice**



Committed to original mission while acknowledging organizations now offer services across serious illness continuum



Private equity investment, evolving payment arrangements, explosion new providers dramatically reshaping hospice field



Through challenging times, our reason for being to provide value by looking at bigger picture, anticipating change, and advocating for sustainable future



Time is now to chart a course for another 40 years of mission-driven success for non-profit hospices and depends on us to shape that future

Mission & Vision

Collectively with our members, we are leading a healthcare transformation, setting the highest standards of care across the nation

We

Innovate

Advocate

Collaborate



Vision

That during the last stages of life, every person experiences exceptional care that matches their goals, values, and preferences

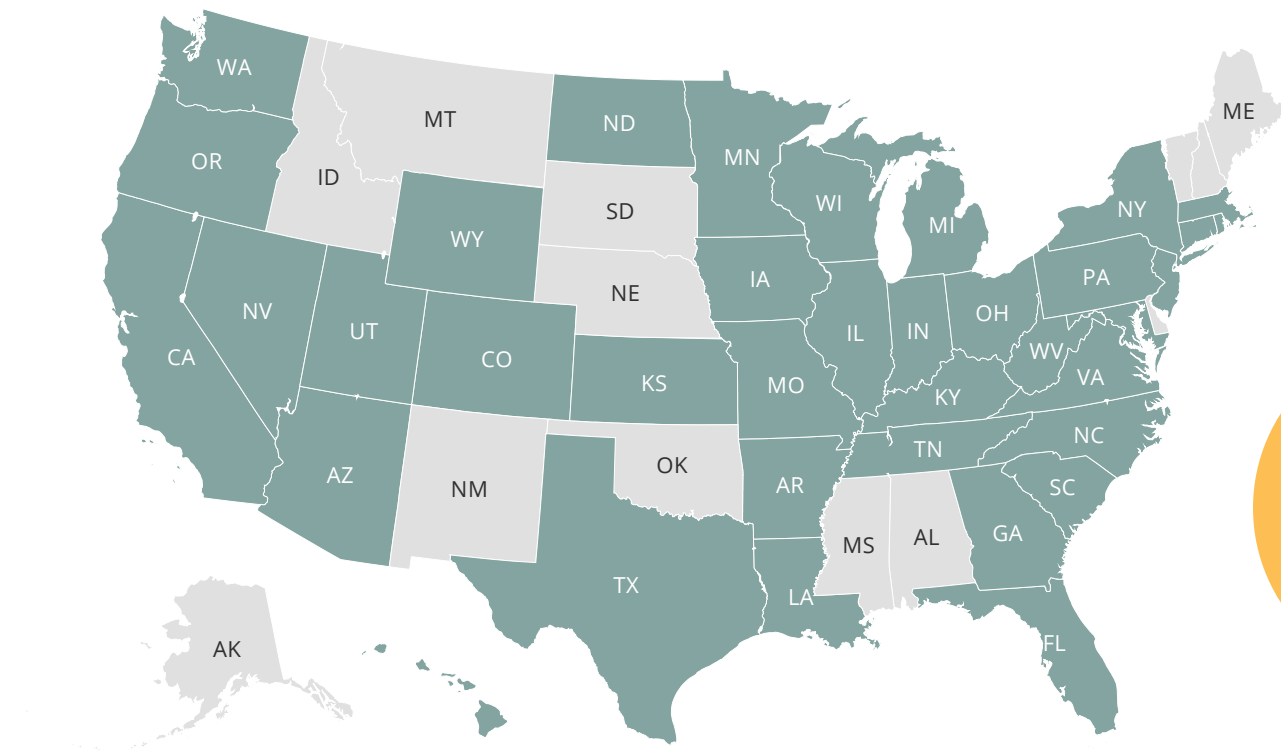
Mission

To be the national voice for the future of hospice, palliative, and advanced illness care on behalf of our not-for-profit, mission-driven membership, through our influence among key decision makers and stakeholders in health care

NPHI Membership

38 States
& D.C.

If you know anyone in these grey states that would be a good fit for NPHI, let us know.



110+
Members

Powered by Bing
© GeoNames, Microsoft, TomTom

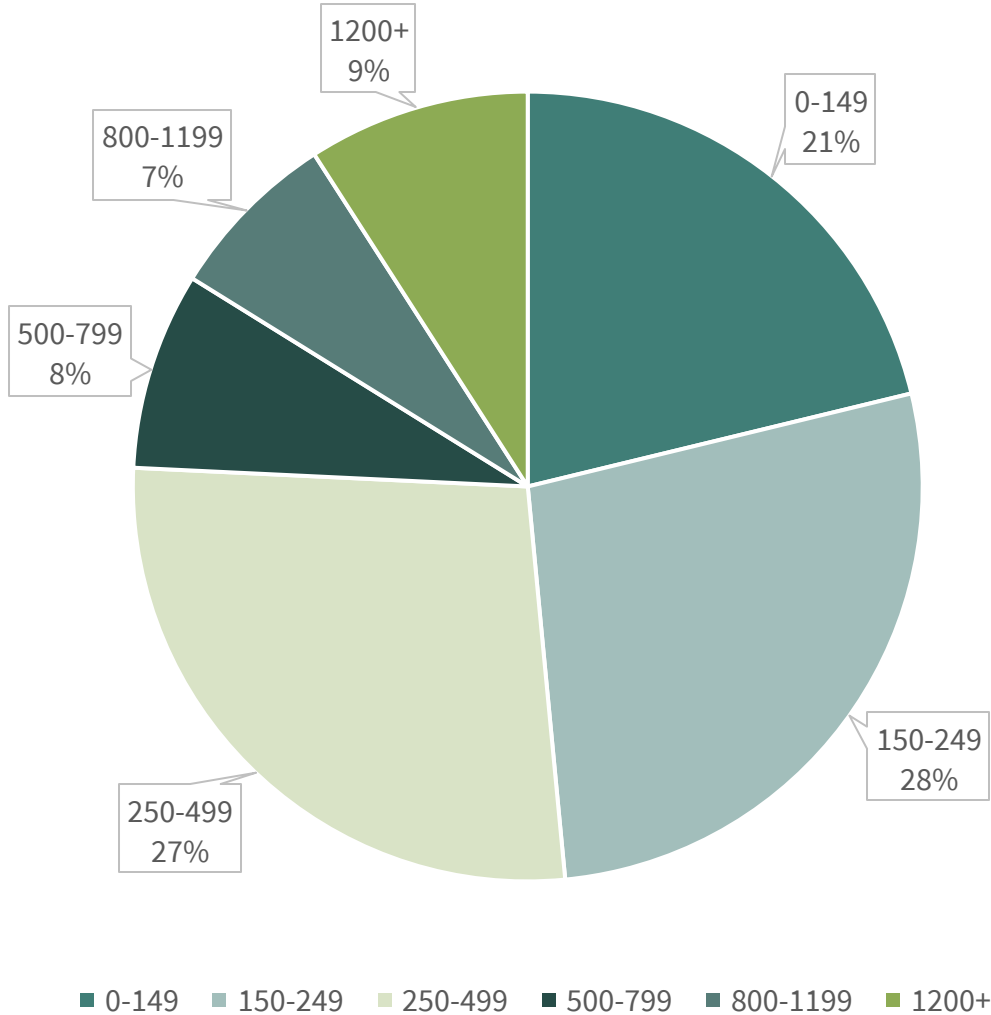


Members By Hospice Census

From the
Largest
to the
Smallest

Our members
are split roughly
half with:

ADC < 250
ADC > 250



Total Patients Cared For



We care for this nation's sickest patients
In a manner of their choosing

580,846

Patients in 2023

50,634

*Hospice Patients Daily

132,564

Palliative & Advanced
Illness Patients

*Based on 2023 figures



Annual Figures

Veterans

39,000+

Cardiac

34,800+

Pulmonary

22,400+

Dementia

35,200+

Oncology

65,300+

Where are we headed?

Prioritizing Innovation

Through our first-in-class resource production



Driving Collaboration

Between like-minded NPHI members, Congress, and CMS to achieve our goals



Leading With Advocacy

Determining the future of end-of-life care in the United States



Our fundamental goal is to make members competitive in their respective markets





Innovation Lab

Innovation Lab Goals

Quality	Convener and aggregator to identify, validate, and disseminate best practices for population health care
Access	Increase education, awareness, and ultimately access to high-quality population health care
Outcomes	Develop increased skills and abilities to measure both quality outcomes and cost of care
Value	Enable NPHI members to demonstrate high-value care and participate in accountable health care delivery

Innovation Lab Pillars



Collective Intelligence- External Expertise



9/12/24 Webinar- Striving for Excellence in Heart Failure Care: Resources and Certification

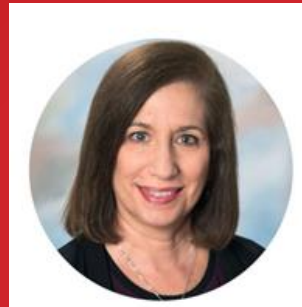
Laura Alexoff, RN, BSN, CHPN
Specialty Programs Nurse Coordinator

Hospice of Cincinnati



Marie Cunningham, MHI
Manager of Professional Relations

Hospice of Cincinnati



F. Evan Patrick, BBA, NRP,
Business Development Manager

Gilchrist



Presented Jointly with:



Population Health Opportunity/Benefits

- Support the IHI “Triple Aim”*
- Quality - Improve Patient Care and Population Health
- Provide services earlier in serious illness, before hospice
- Prepare members to participate in value-based payment arrangements
- **Discussion question: What is your experience with population health?**

■ *<https://www.ihl.org/improvement-areas/improvement-area-triple-aim-and-population-health>

Population Health Implementation Learnings

- Implementation takes commitment and dedicated resources
- Finding partners/payers challenging
- Organizations need mechanism to identify appropriate patients
- Requires care management and navigation, differs from traditional hospice case management



Patient & Caregiver Resources

Resources for Patients, Families, and Caregivers

Population Health Patient and Caregiver Resources

- Resources for patients/families
 - Overview on illness
 - Tips on medication and treatment management
 - Information on advance care planning, palliative care, hospice
 - Links/appendices with additional materials
 - Can be printed or given as electronic file
- Free to you and public on NPHI website:
<https://www.hospiceinnovations.org/caregiver-resources/>

Current Patient/Caregiver Resources

Cardiac

Advanced Cardiac Care Program
A specialized program for people living with advanced cardiac disease

PATIENT AND CAREGIVER HANDBOOK




Available In Spanish

NPHI National Partnership for Healthcare and Hospice Innovation

Lung

Advanced Lung Care
A guide for people living with advanced lung disease

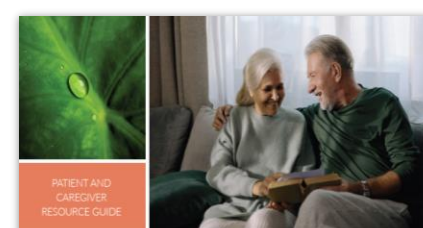
PATIENT AND CAREGIVER HANDBOOK



Provided by:
(Insert logo here)

NPHI National Partnership for Healthcare and Hospice Innovation

Dementia



PATIENT AND CAREGIVER RESOURCE GUIDE

Dementia Care Resources
A guide for people living with dementia

NPHI National Partnership for Healthcare and Hospice Innovation

Veterans



PATIENT AND CAREGIVER RESOURCE GUIDE

Serving Those Who Served Us
A Resource Guide for Hospice & Palliative Care Veterans, Families, and Caregivers

NPHI National Partnership for Healthcare and Hospice Innovation

Oncology



PATIENT AND CAREGIVER RESOURCE GUIDE

Advanced Cancer Care Resources
A guide for people living with cancer and their caregivers

NPHI National Partnership for Healthcare and Hospice Innovation

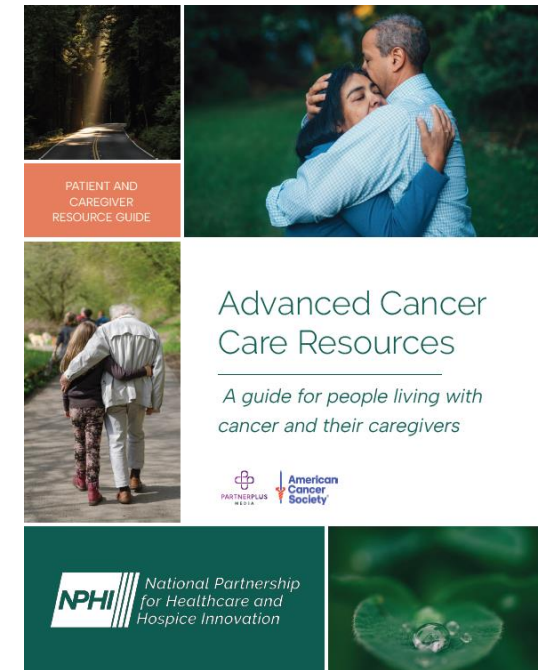
New Cancer Patient & Caregiver Guide

Features

- Collaboration with American Cancer Society
- QR codes/links to ACS resources
- Concise, shorter guide
- 6th grade reading level
- Tear-out stoplight and medication sheets

Subject Matter Experts

- Stephanie Alvey Banks – Hosparus Health
- LaNay Arcady, RN, BSN, OCN – HopeWest
- Lynda Weide, MSN, RN, CHPN – Ohio's Hospice/Pure Healthcare





LaNay Arcady, Hopewest Hospice

Breakouts

- Break into groups with NPHI representative
- Choose notetaker and someone to summarize discussion for bigger group
- Discuss
 - Current population health experience
 - How your organization could use the patient/caregiver guides
 - Which one(s) are of interest?
 - How would you make these available to patients/families?
 - How would you prepare staff/colleagues to use these?
 - Logistics plan?

Breakout Debrief

- Report on
 - Current population health experience
 - How organization could use the patient/caregiver guides
 - Which one(s) are of interest?
 - How make these available to patients/families?
 - How prepare staff/colleagues to use these?
 - Logistics plan?
 - Other?

Summary

- Patient/family caregiver resources available to you, your patients and their family caregivers
- <https://www.hospiceinnovations.org/caregiver-resources/>
- Use to supplement other population health efforts
- NPHI team available to discuss further

Innovation Lab Contact



Cameron Muir, M.D
cmuir@hospiceinnovations.org



Marian Grant, D.N.P.
mgrant@hospiceinnovations.org